

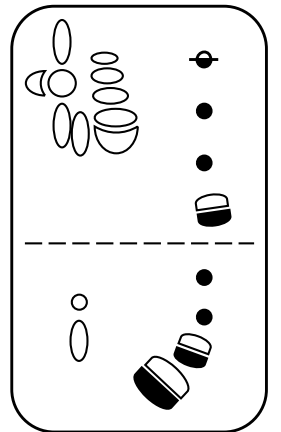
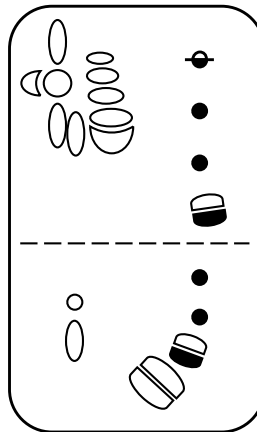
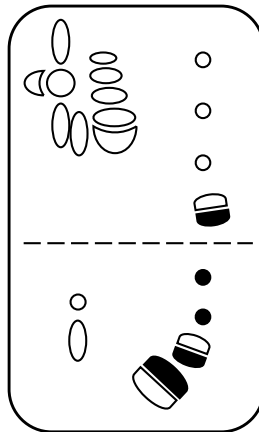
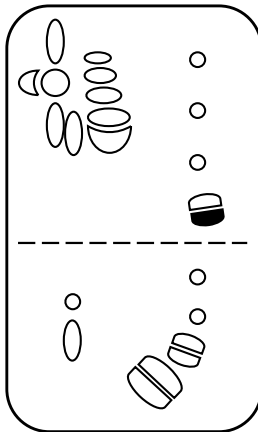
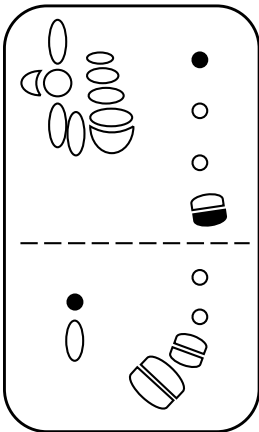
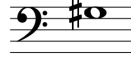
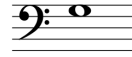
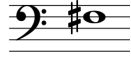
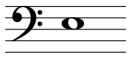
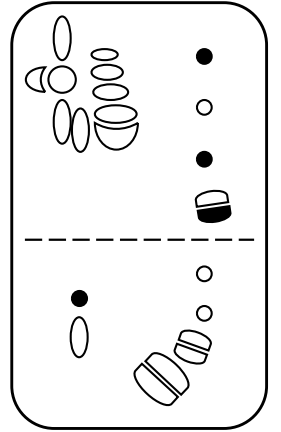
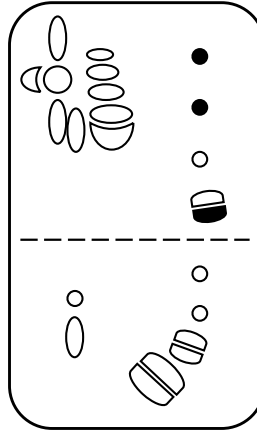
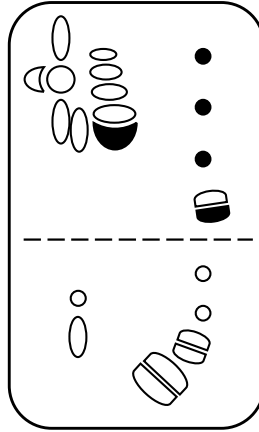
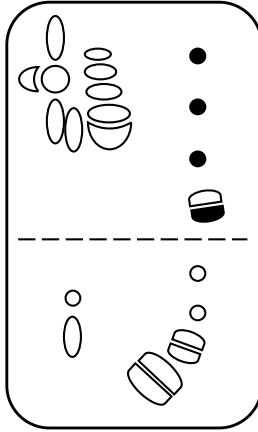
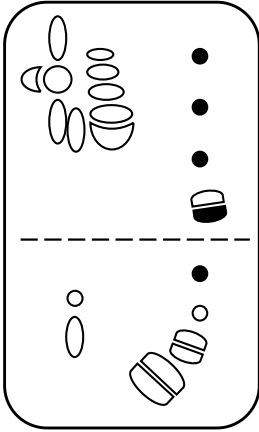
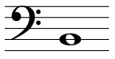
Tablature Basson AJ

1) Doigtés courants

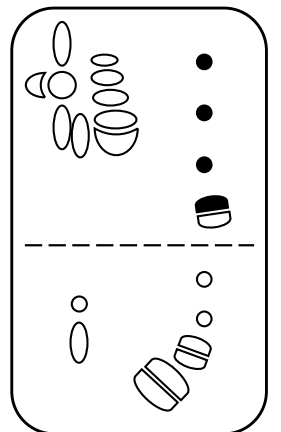
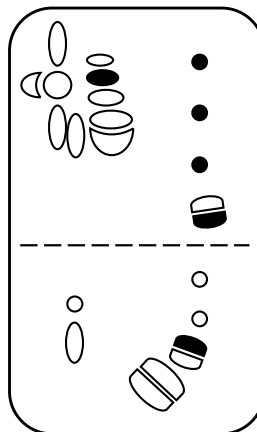
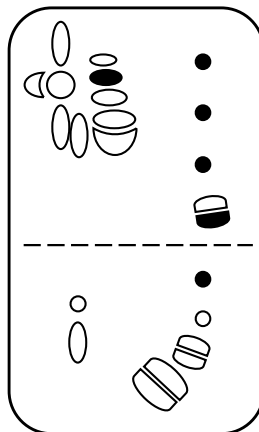
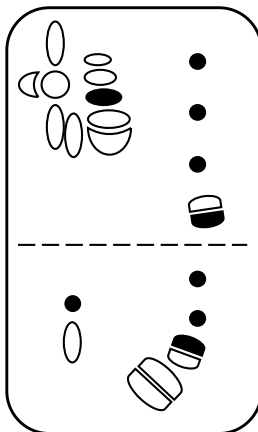
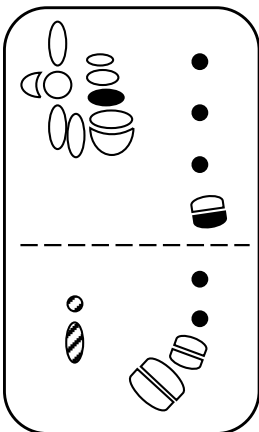
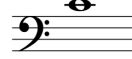
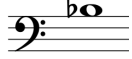
Three tablature diagrams for bassoon AJ. Each diagram consists of a musical staff with a bass clef and a key signature (B-flat for the first two, B for the third), and a finger diagram below. The finger diagram shows the left hand (top) and right hand (bottom) with fingers numbered 1-5. The diagrams illustrate different fingerings for the same notes.

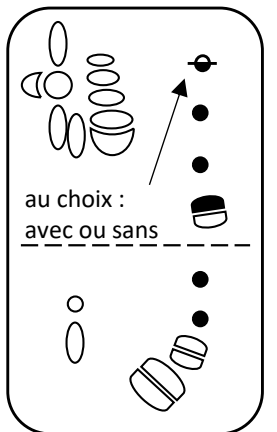
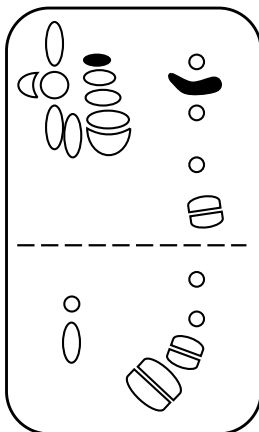
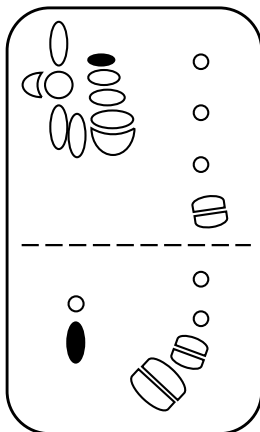
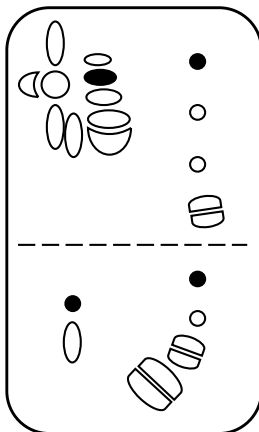
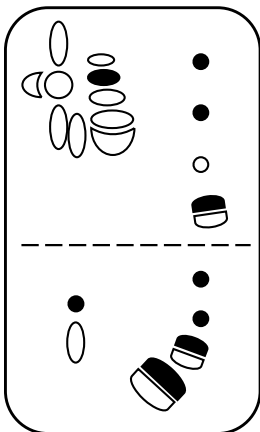
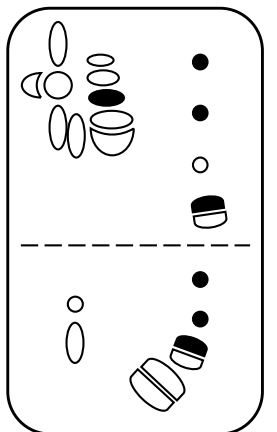
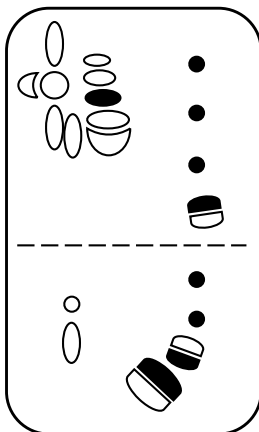
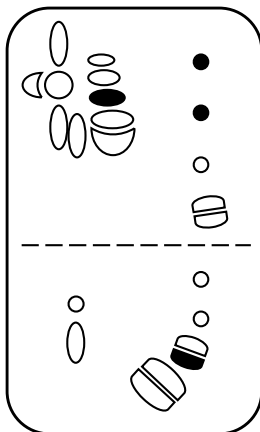
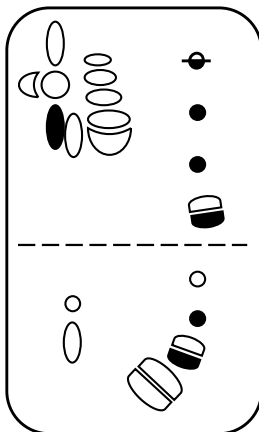
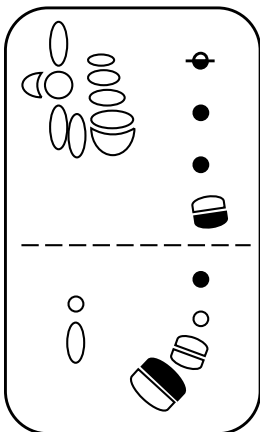
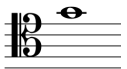
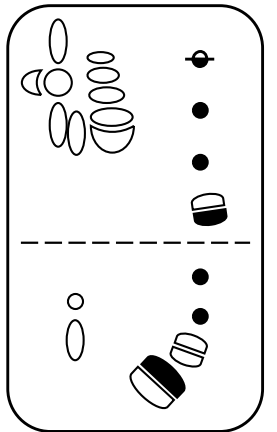
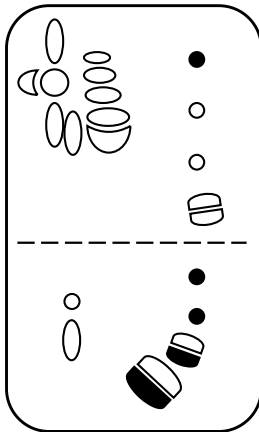
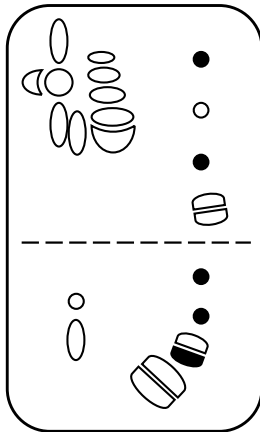
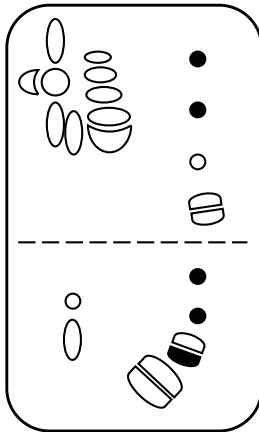
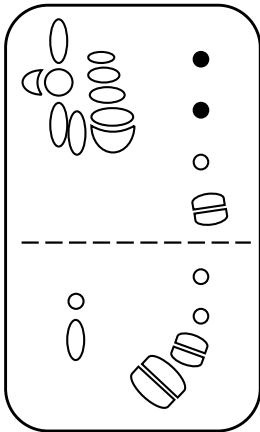
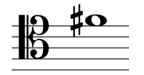
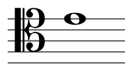
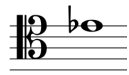
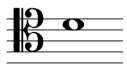
Five tablature diagrams for bassoon AJ. Each diagram consists of a musical staff with a bass clef and a key signature (G major, F major, B-flat major, E-flat major, and D major), and a finger diagram below. The finger diagram shows the left hand (top) and right hand (bottom) with fingers numbered 1-5. The diagrams illustrate different fingerings for the same notes.

Five tablature diagrams for bassoon AJ. Each diagram consists of a musical staff with a bass clef and a key signature (G major, F major, B-flat major, E-flat major, and D major), and a finger diagram below. The finger diagram shows the left hand (top) and right hand (bottom) with fingers numbered 1-5. The diagrams illustrate different fingerings for the same notes.



Définir le plus juste :
 Sans ou avec trou du pouce
 ou clef de fa#







au choix :
avec ou sans

Tablature Basson AJ

2) Compléments de doigtés

Plus haut et fort



PPP



Plus bas



PPP



PPP



option

Plus haut



**Fourche
(haut)**



**PPP
(plus juste)**

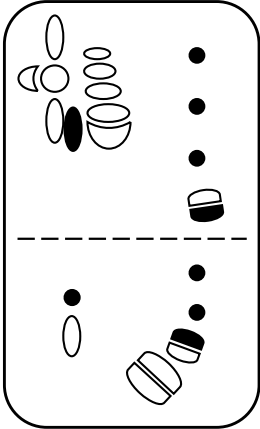
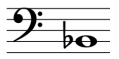


option

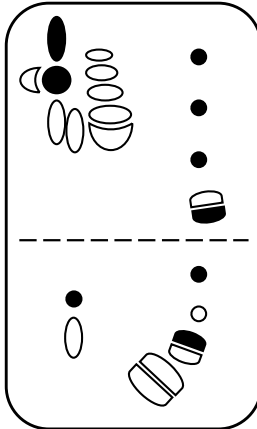
Plus PPP



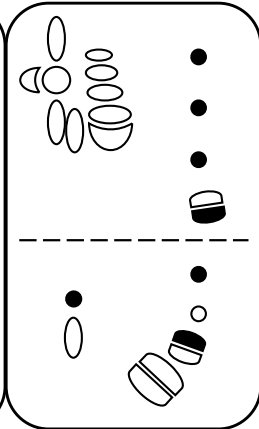

Plus bas



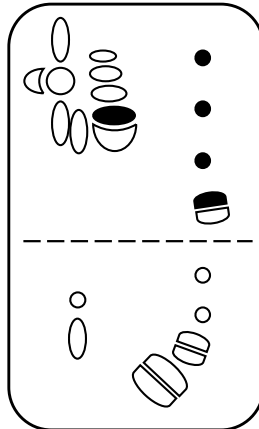
PPP



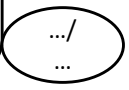
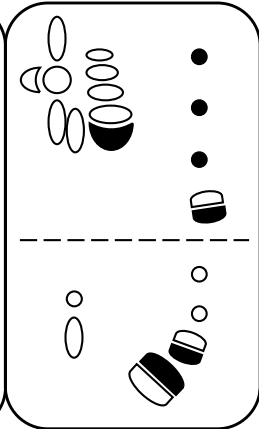
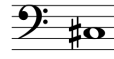
Plus haut et FF



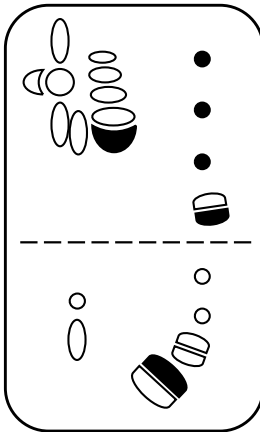
Variant



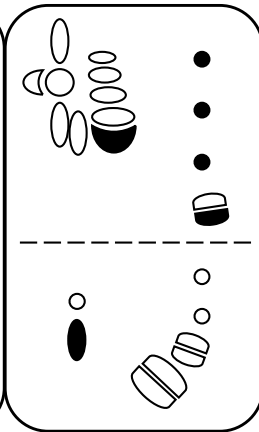
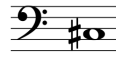
Couvert



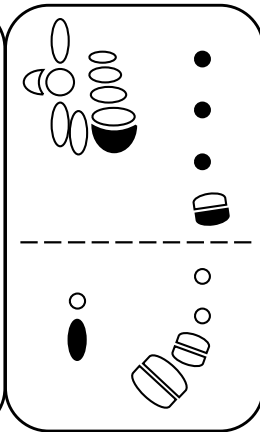
Plus bas



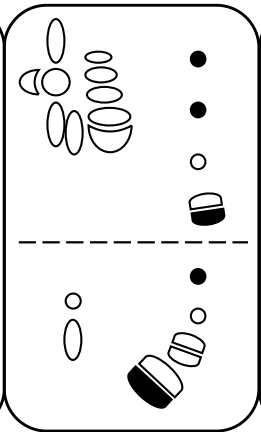
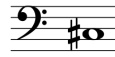
Plus haut



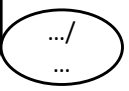
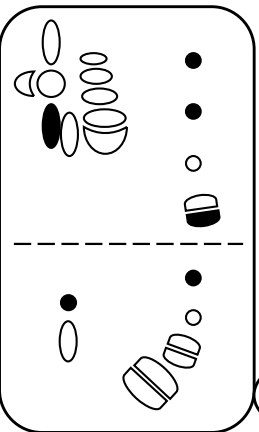
Plus haut et stable



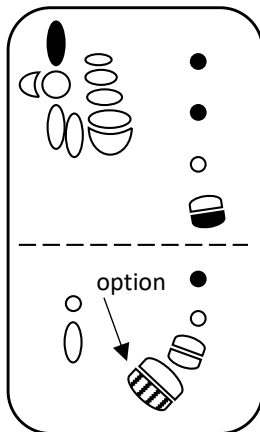
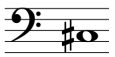
Fourche



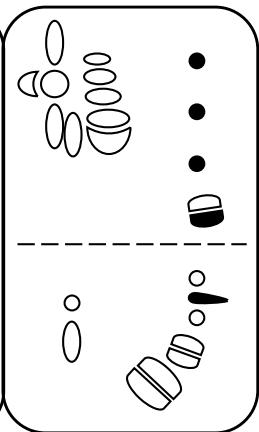
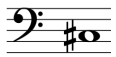
Fourche + stable + haut



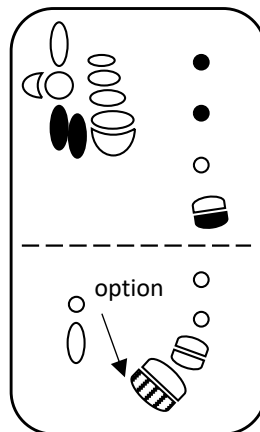
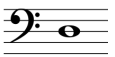
PPP



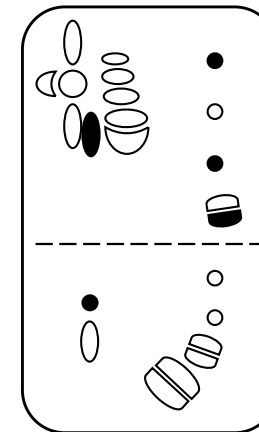
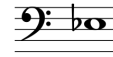
Trille dans vitesse



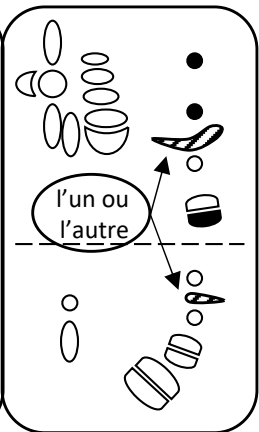
PPP



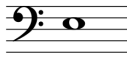
Pus haut



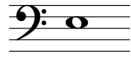
Trille dans vitesse



FFF



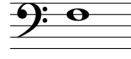
Plus haut et fort



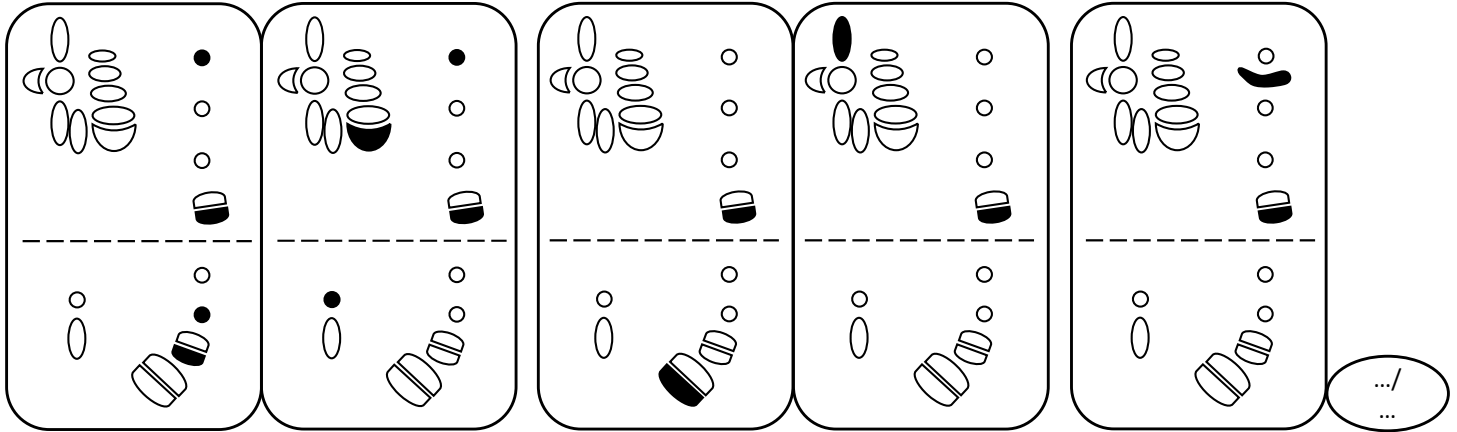
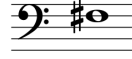
Plus haut



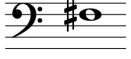
PPP



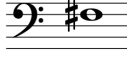
PPP



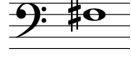
PPP



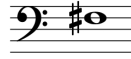
PP et PPP



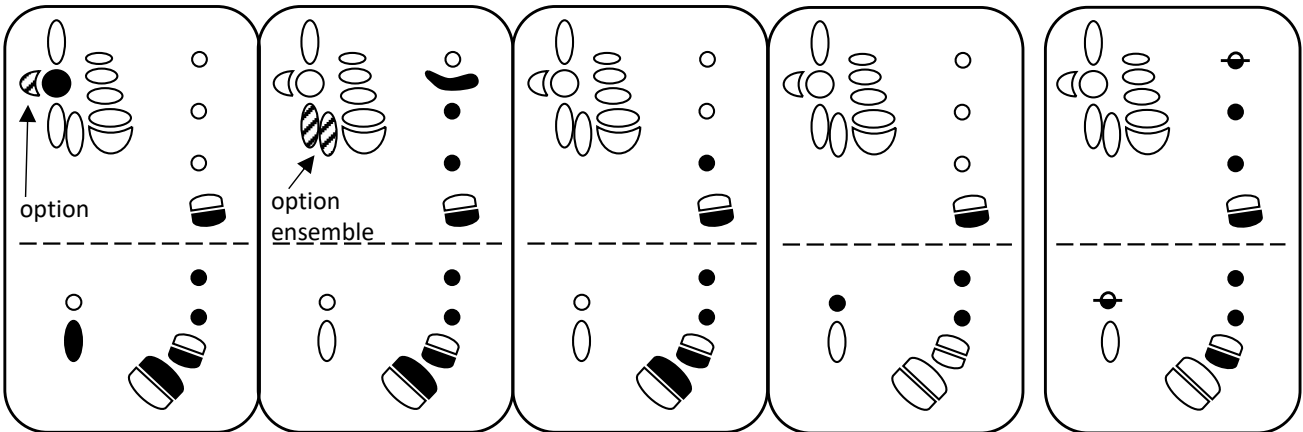
Plus rond



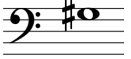
**Enchaînement
fa#/sol#**



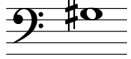
Attaque PP



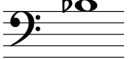
PP



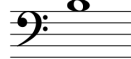
Plus bas



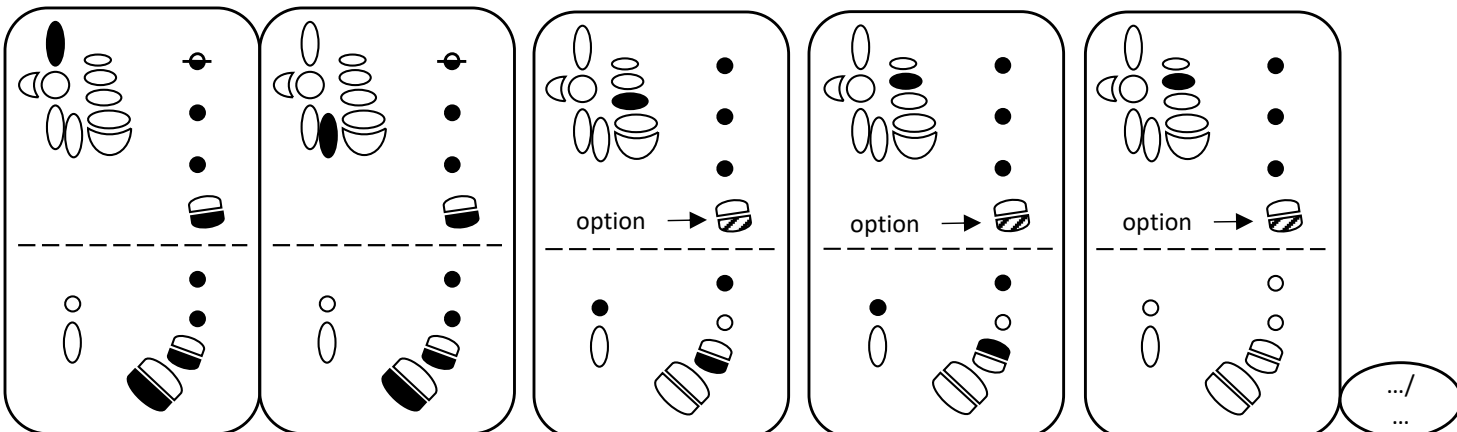
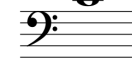
Fourche



**Plus haut et
stable**



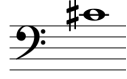
**Plus bas et
pour vitesse**



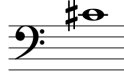
Baroque



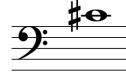
Plus bas, pratique



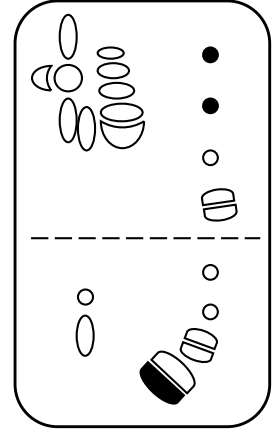
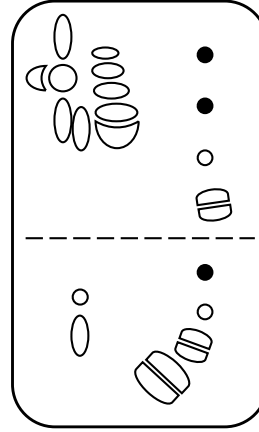
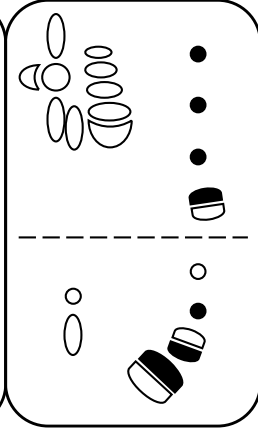
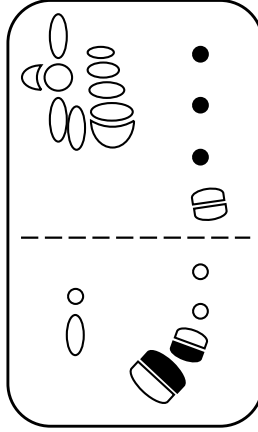
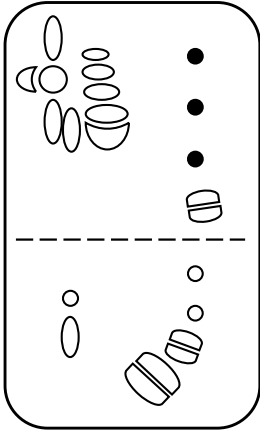
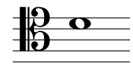
Plus PPP et bas



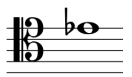
Fourche



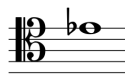
Plus ouvert



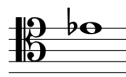
Plus ouvert



Liaisons



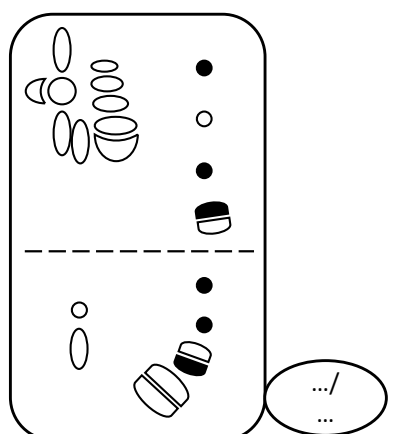
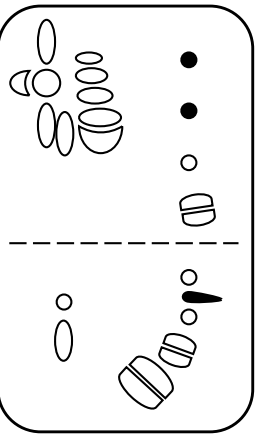
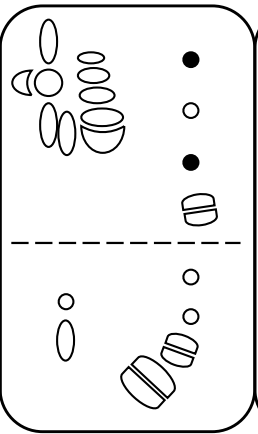
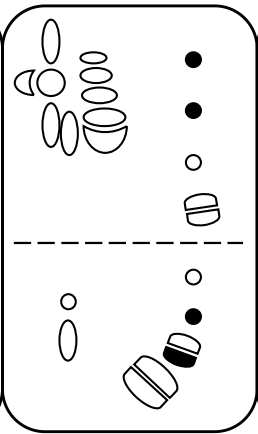
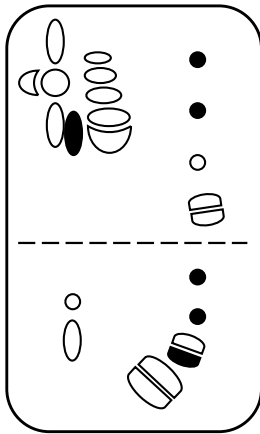
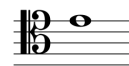
Fourche



Trille



Plus haut et coloré



Un doigt



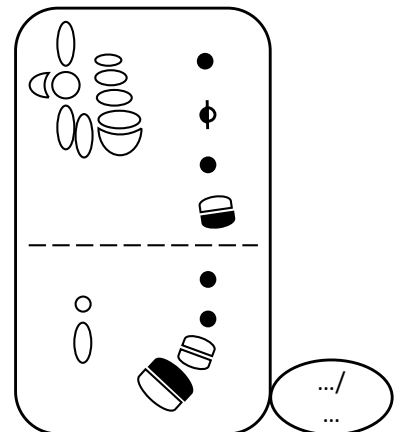
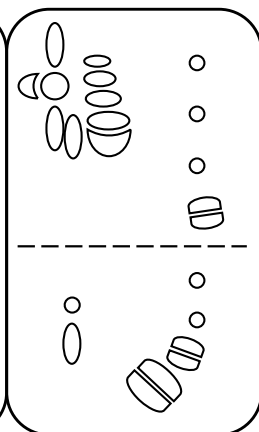
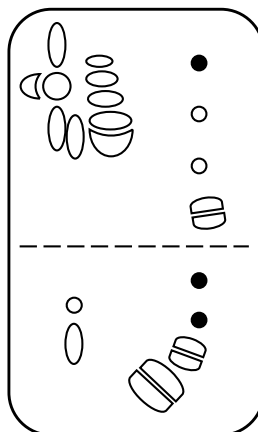
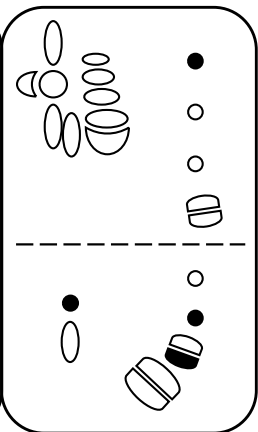
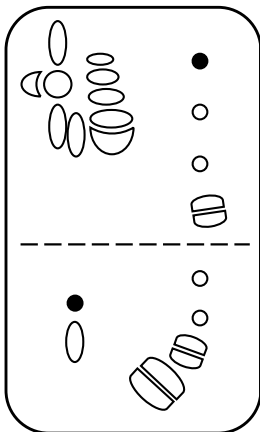
Un doigt



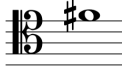
A vide



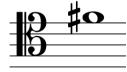
Plus précis



Plus précis



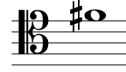
Fourche 1



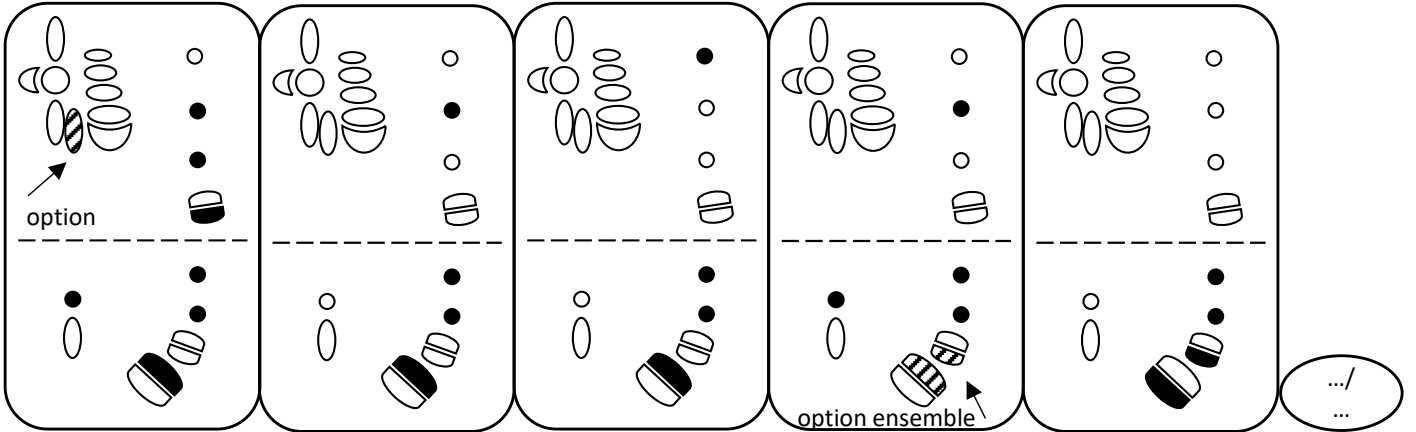
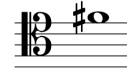
Fourche 2



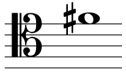
Fourche 3



Un peu plus bas



PPP



Plus précis



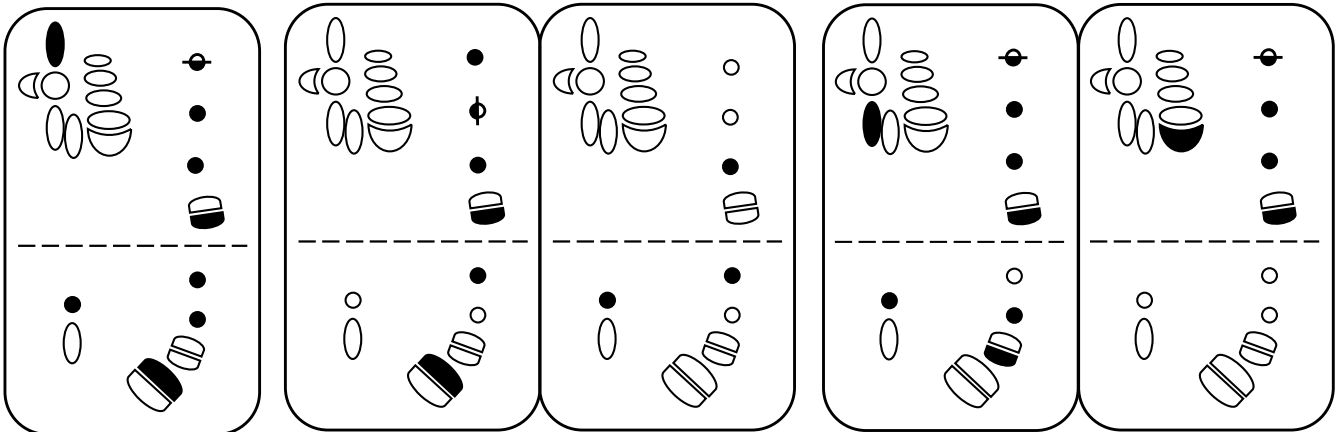
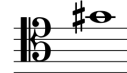
Liaison



Plus bas



Petit sol#



Plus bas



Liaison



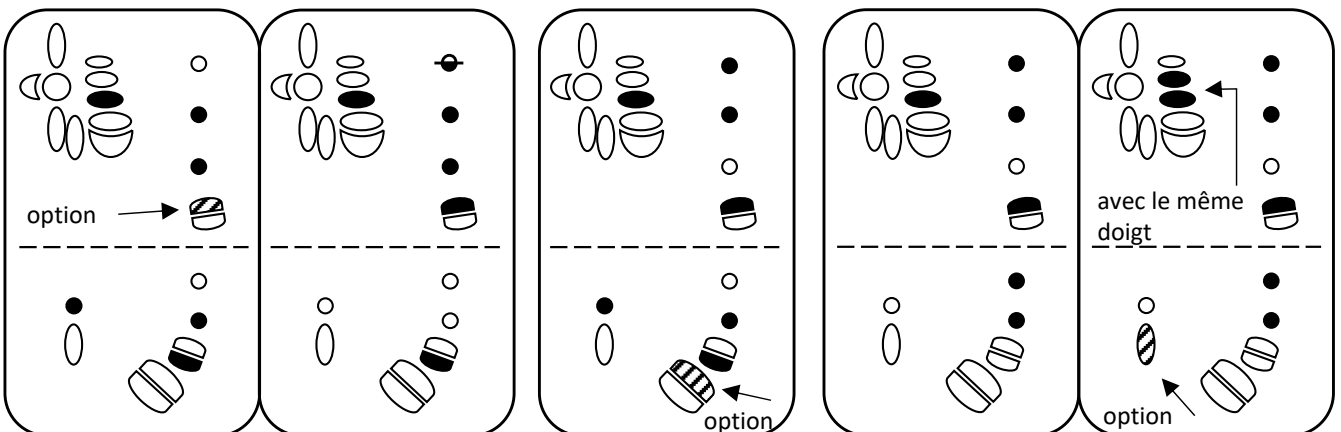
Liaison



Liaison, plus bas



Liaison, plus bas



Liaison



Liaison



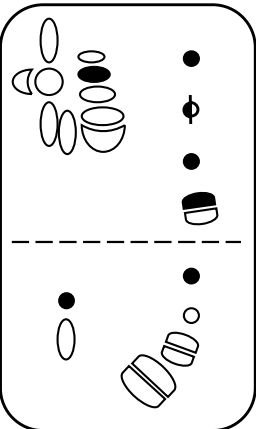
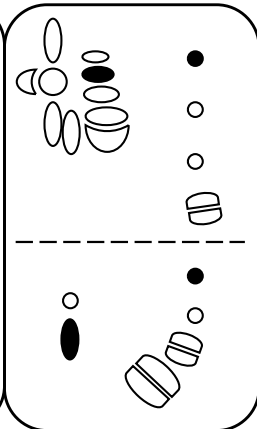
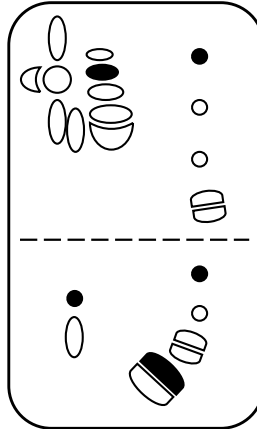
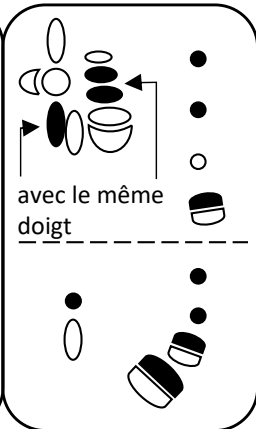
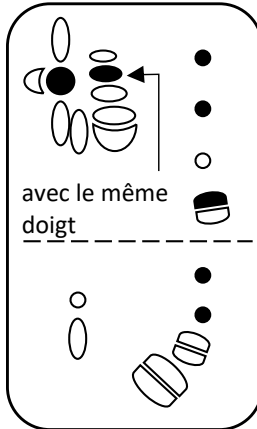
Plus bas



Liaison



PPP



Piano, plus haut



Plus haut



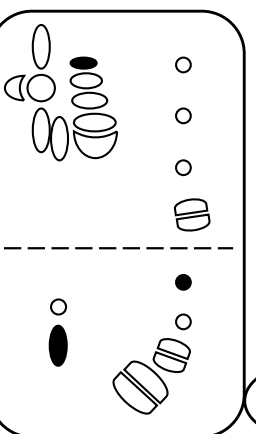
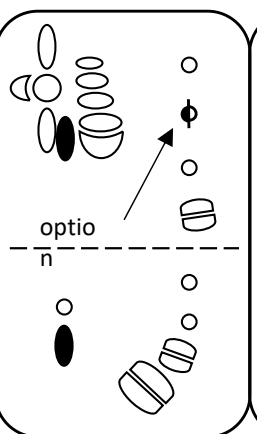
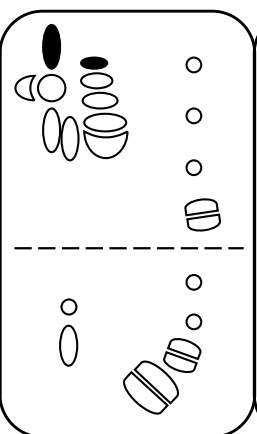
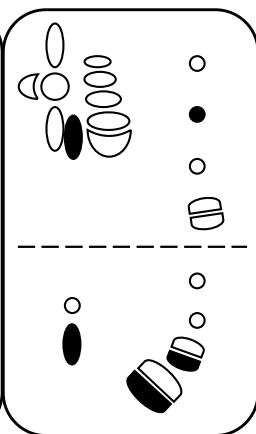
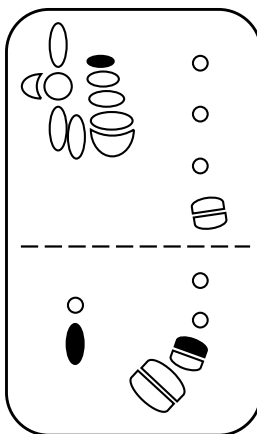
Plus haut



Plus haut



Plus bas



Très bas, do#



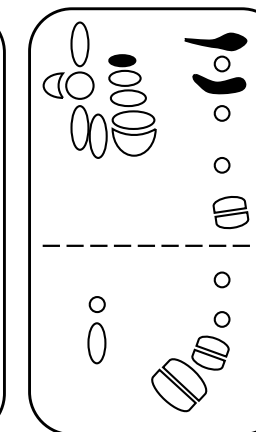
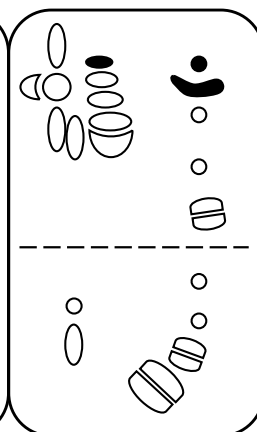
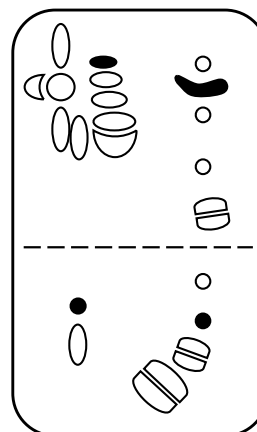
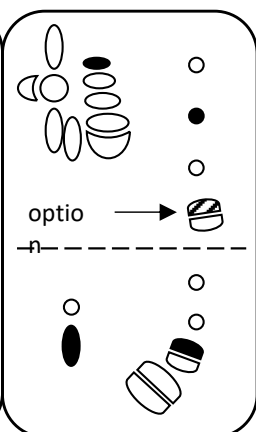
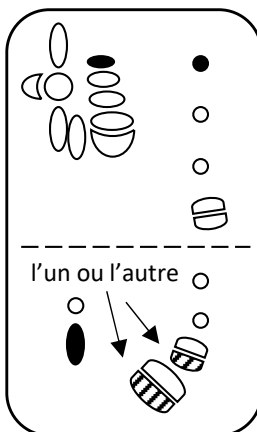
Plus bas

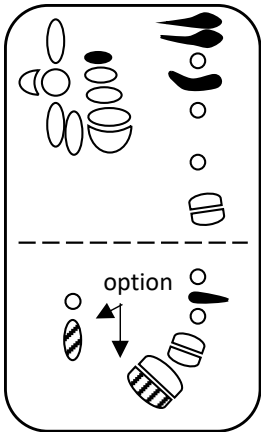


Plus bas



Plus bas

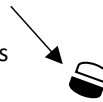




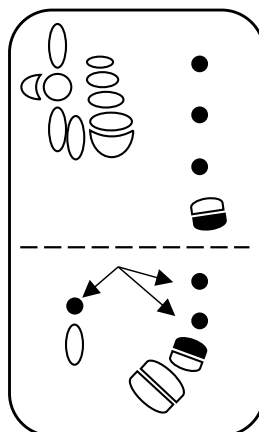
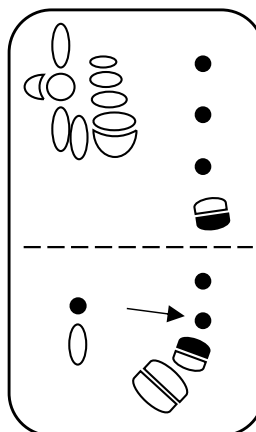
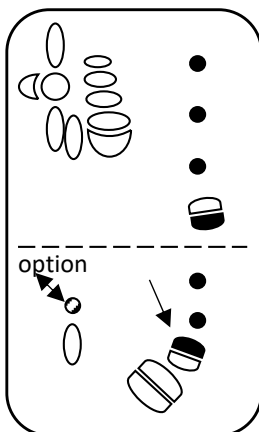
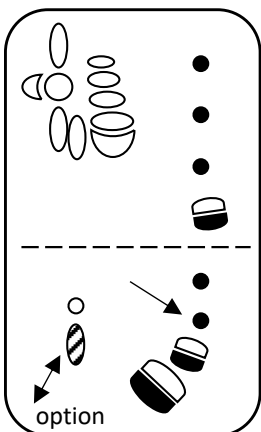
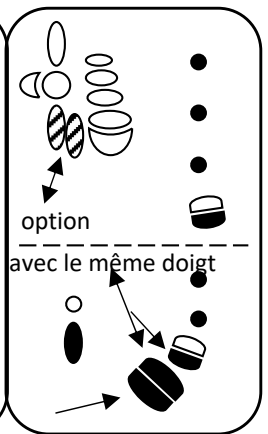
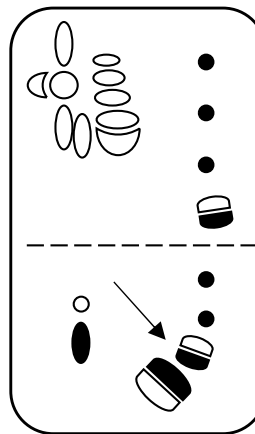
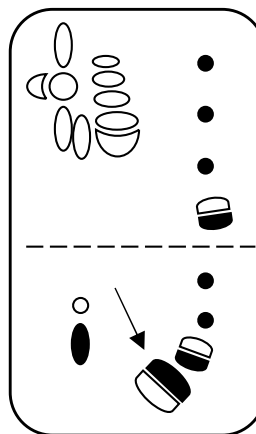
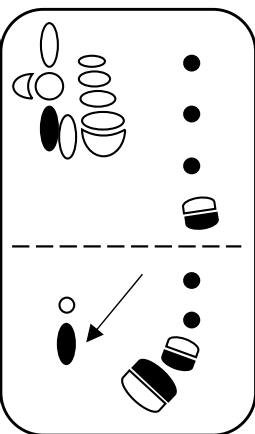
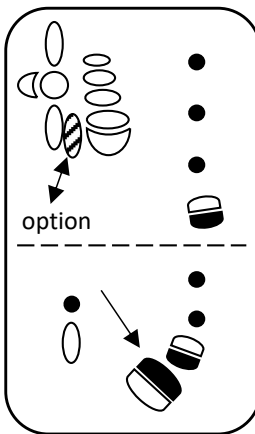
Tablature Basson AJ

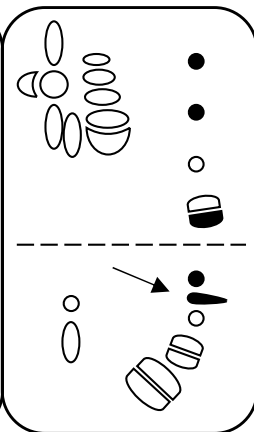
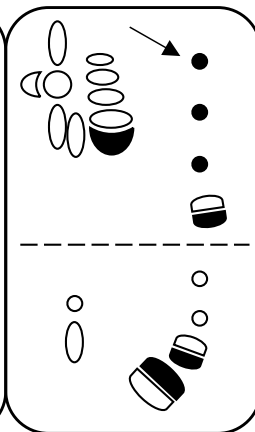
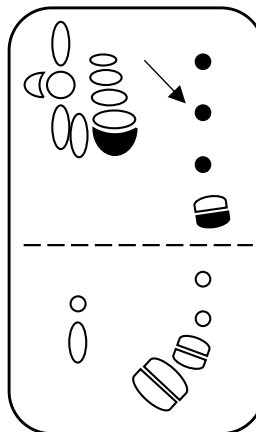
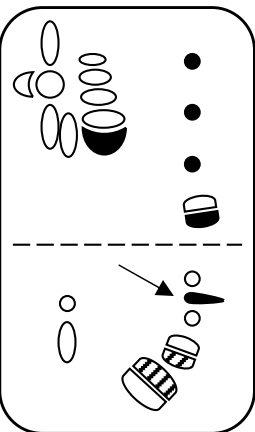
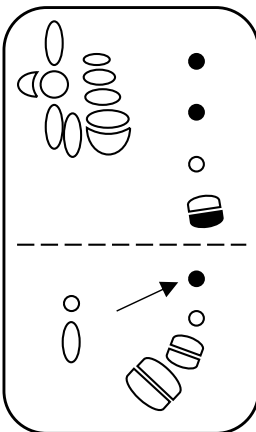
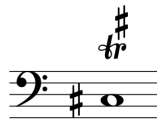
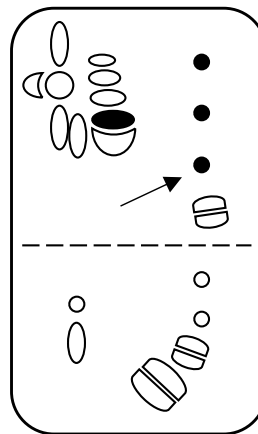
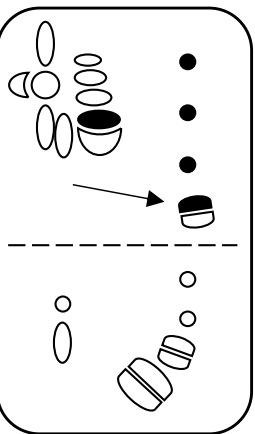
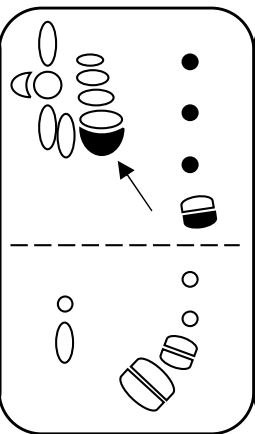
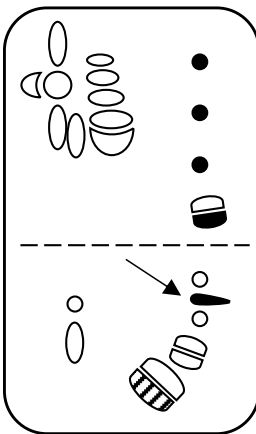
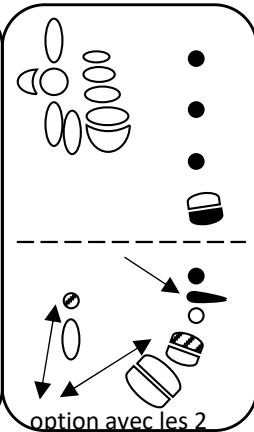
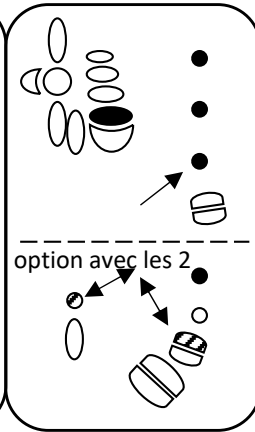
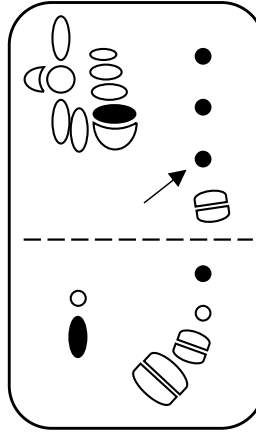
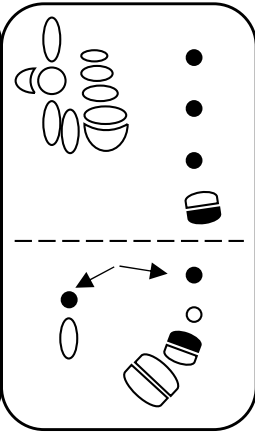
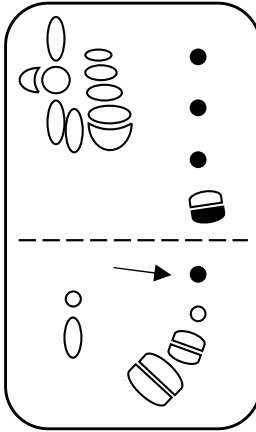
3) Trilles

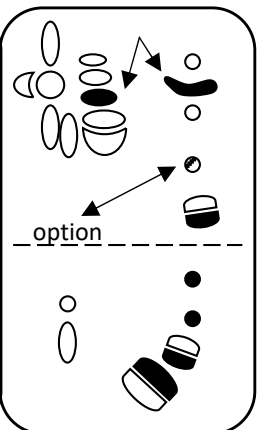
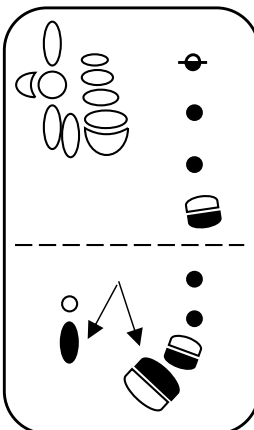
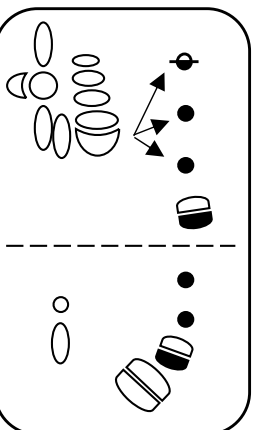
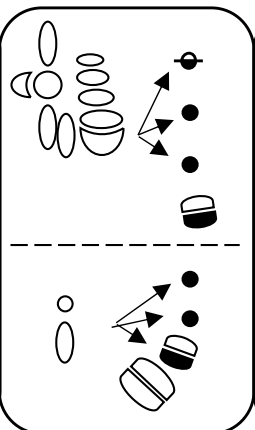
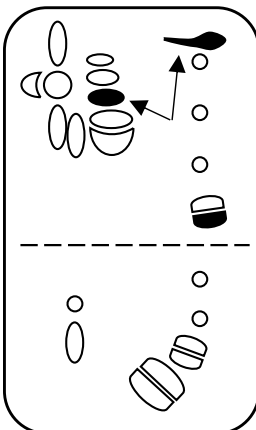
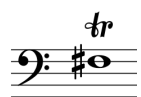
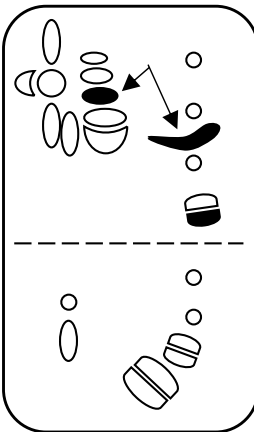
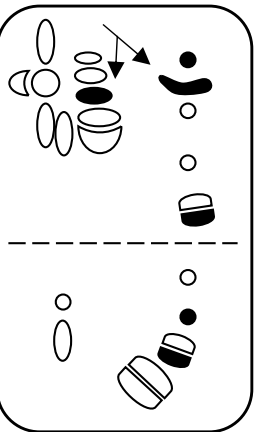
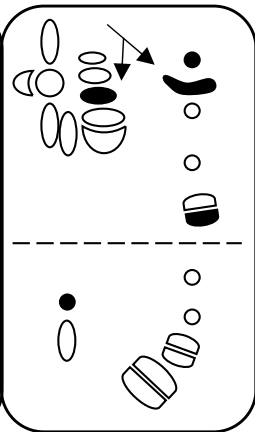
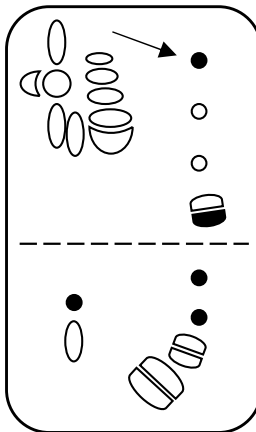
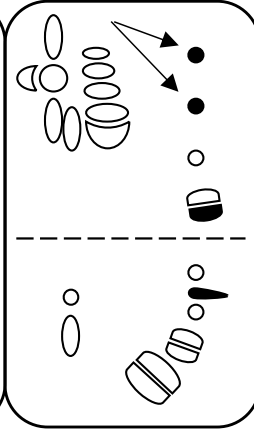
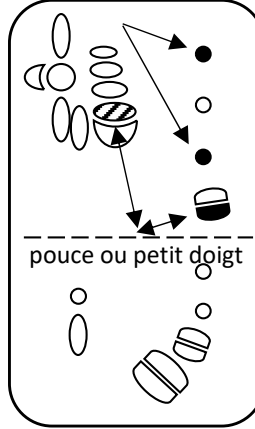
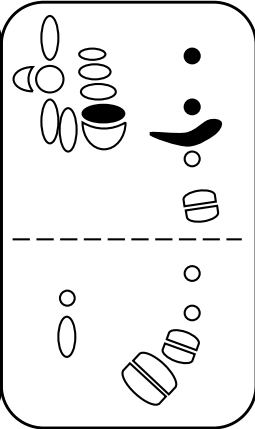
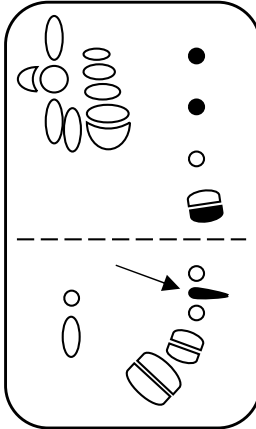
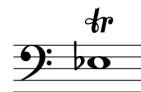
Note :
triller avec ce/ces
clefs/trous

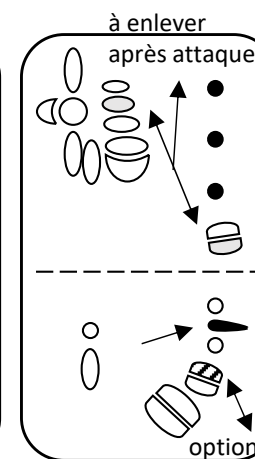
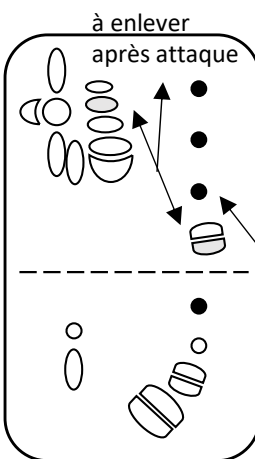
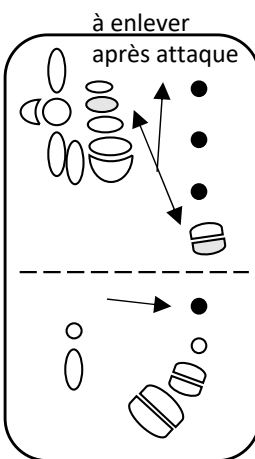
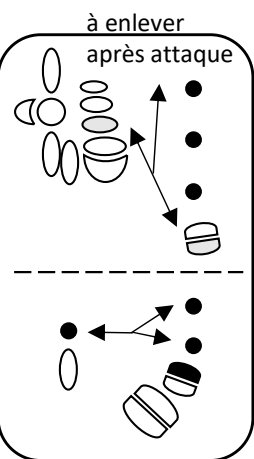
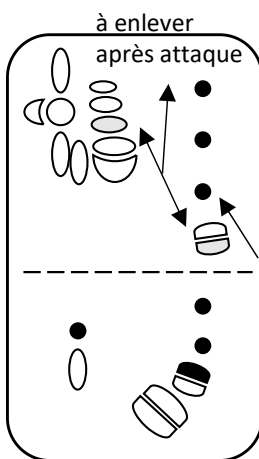
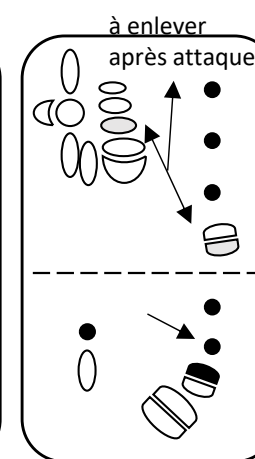
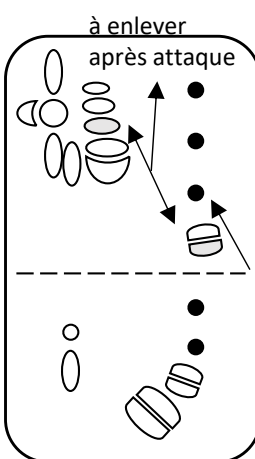
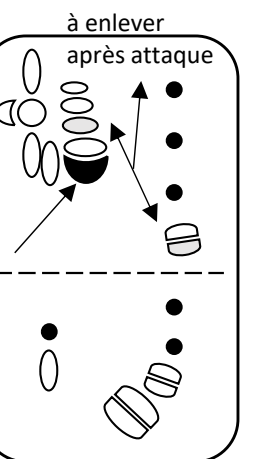
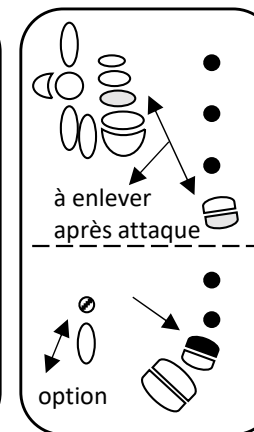
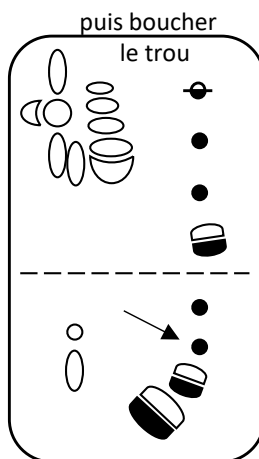
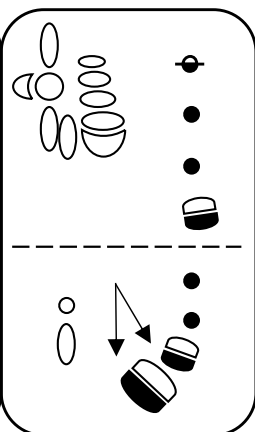
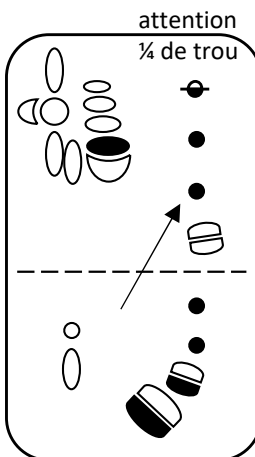
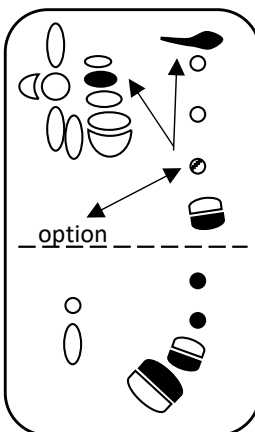
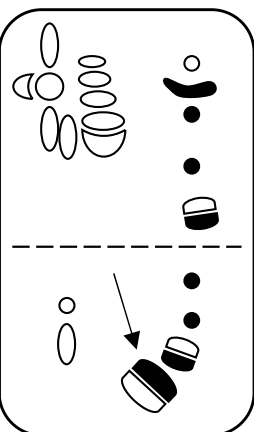
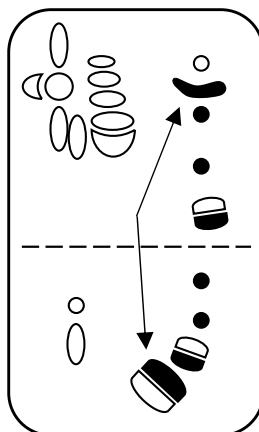


possibilité de
rajouter une/des
clefs/trous
MAIS sans triller
option



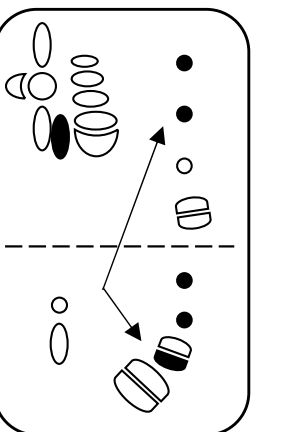
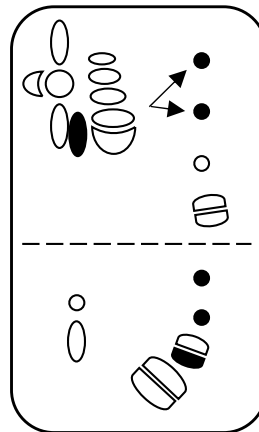
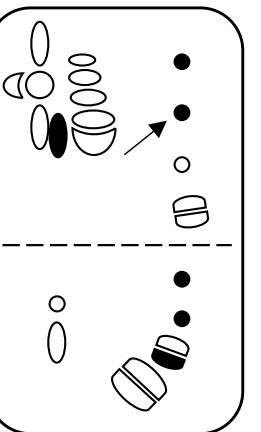
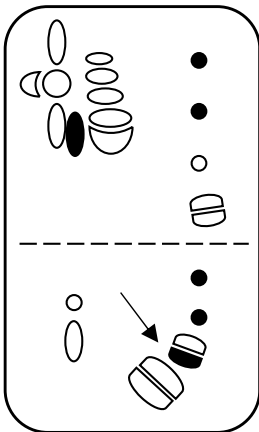
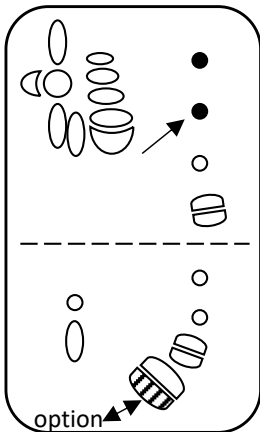
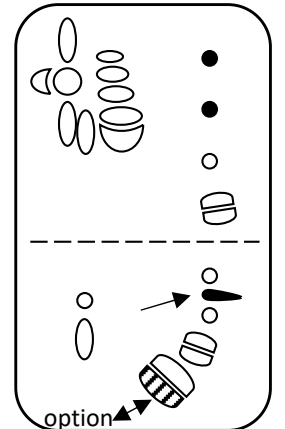
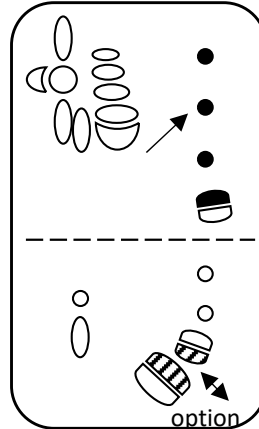
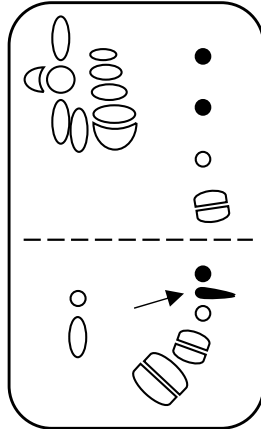
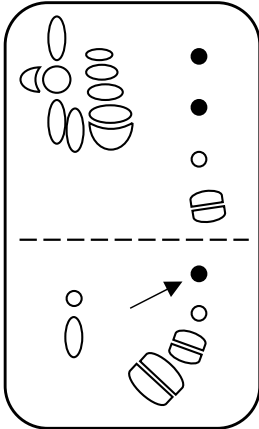
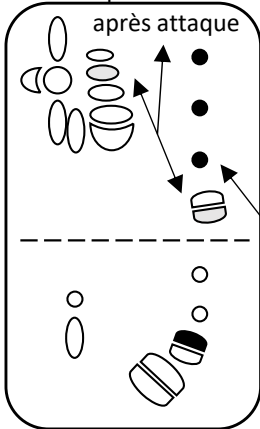




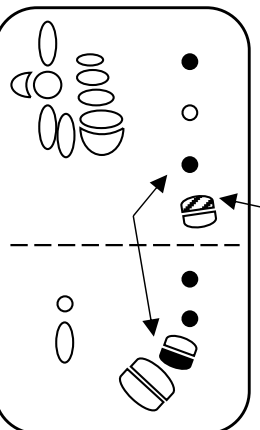
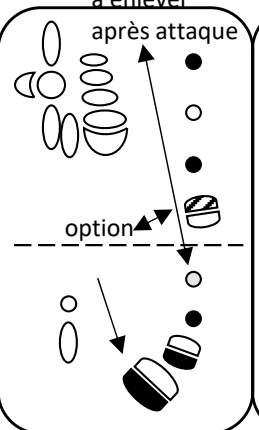
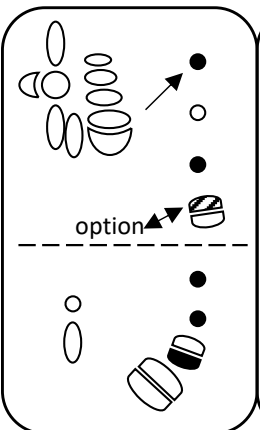


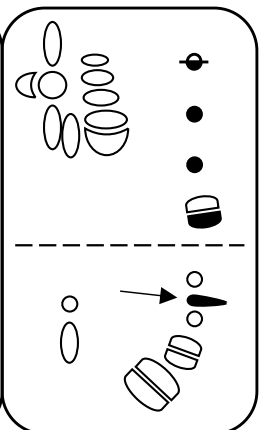
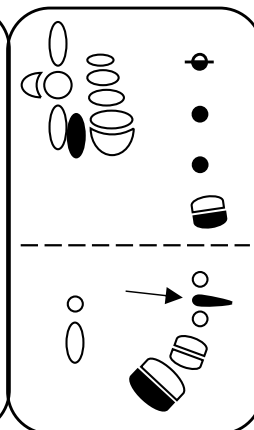
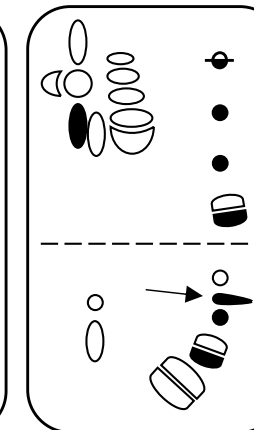
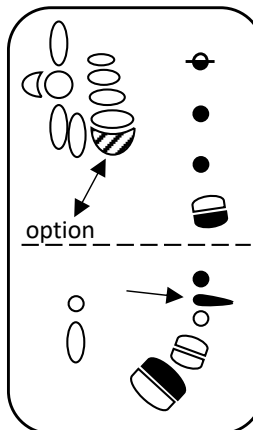
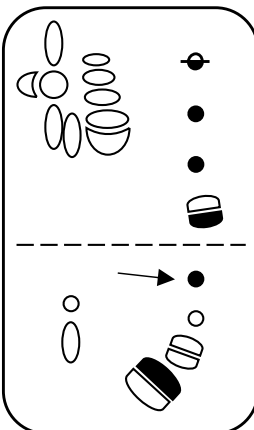
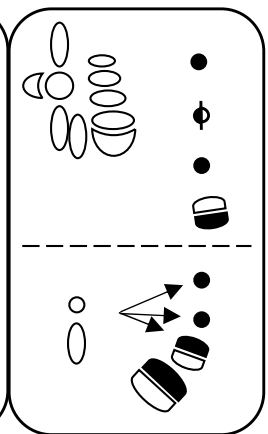
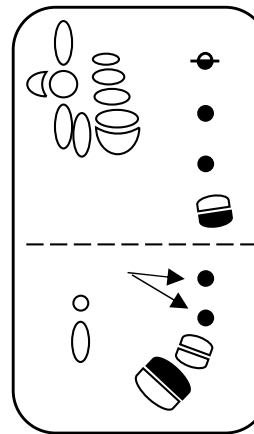
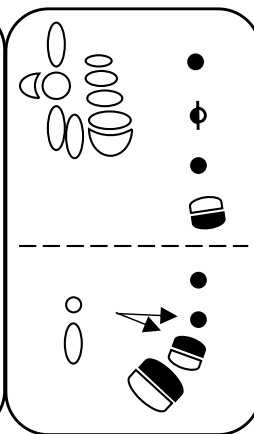
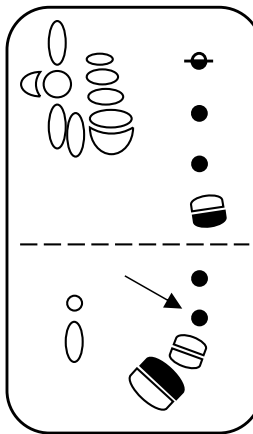
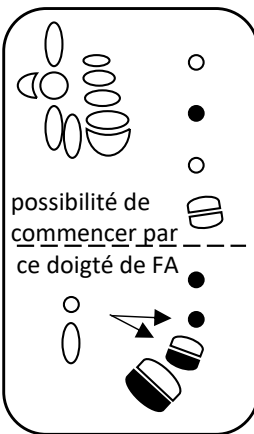
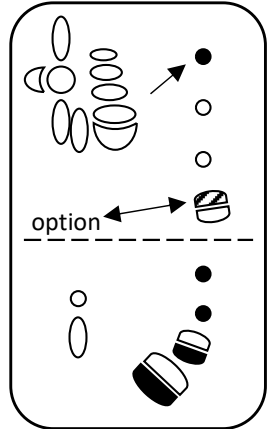
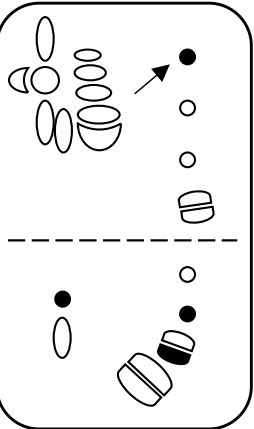
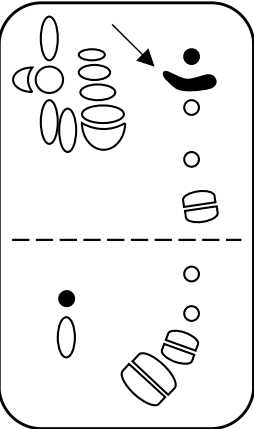
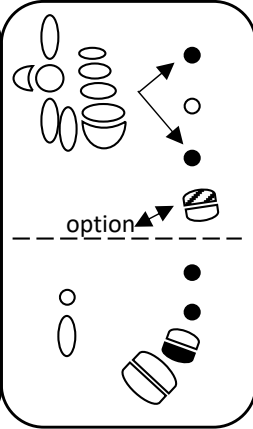
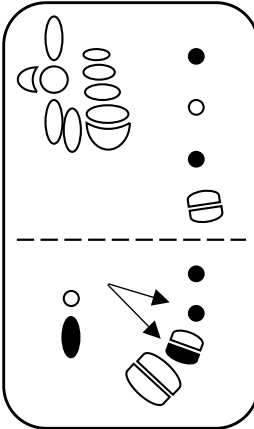


option : à enlever après attaque



à enlever après attaque





à enlever après attaque

à enlever après attaque

on peut triller avec les 2 ou 1

